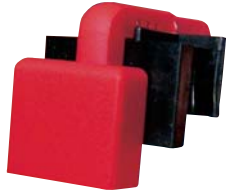


ACCESSORIES






Microswitch NVS 5

Technical data:	Application:
Rated current: ~5A Rated voltage: ~125V - ~250 V	Microswitch NVS-5 is mounted on fuse-links type M, S.

In (A)	Type	Code No.	Packaging (pcs)	Weight (g)
5	NVS 5	004117001	10/340	11.5

Microswitch MK

Technical data:	Application:
Rated current: ~2A Rated voltage: ~250 V	Microswitch MK is mounted on fuse-links type S-M and G-M.

Microswitch MK	Adapter AMK1 for fuses ~690V	Adapter AMK2 for fuses ~1000V
 Pic.05	 Pic.06	 Pic.07

In (A)	Type	Code No.	Packaging (pcs)	Weight (g)
2	MK	004349003 (JMR 8347220)	1/1	10g
-	AMK1	004349001 (JMR 8327610)	1/1	15g
-	AMK2	004349002 (JMR 8347210)	1/1	23g

Microswitch MK + adapter AMK1 are mounted to the fuse type S-M and G-M/ 690V.

Microswitch MK + adapter AMK2 are mounted to the fuse S-M and G-M/ 1000V.

remember

Today many different types of equipment are already fitted with Variable speed drives. In today's industry avoiding down-time can be the same as creating income.

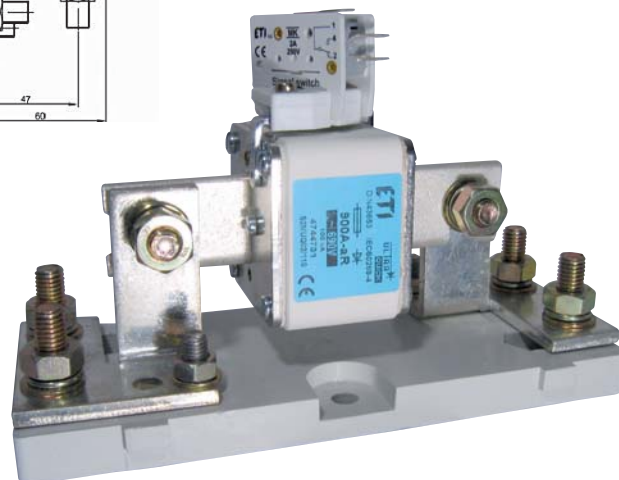
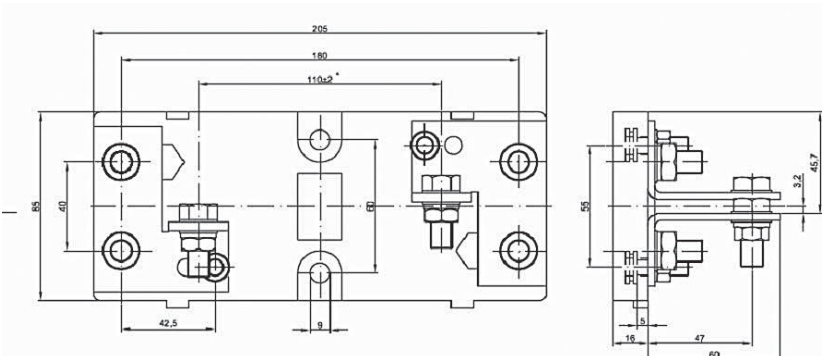
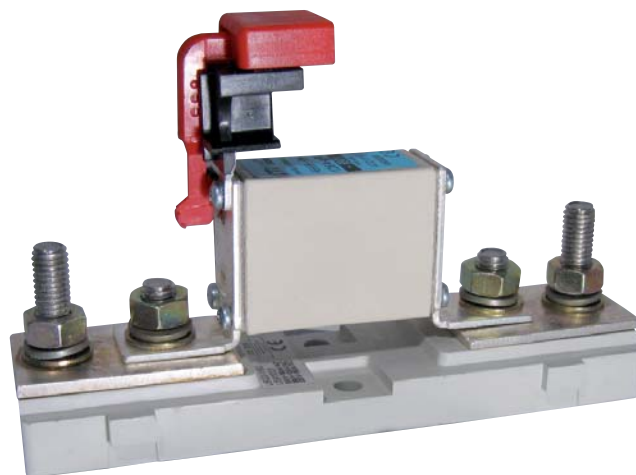
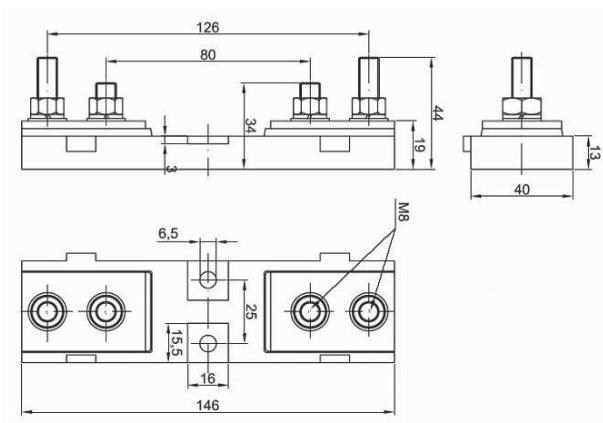
For more information visit: www.eti.si/Electrotechnical_products/Semiconductor_protection

Fuse base US

Technical data:			Application:
Rated voltage: ~690V, ~1000V	US00 Rated current: ~160A, (~690V) ~125A, (~1000V)	US1...3 Rated current: ~710A, (~690V) ~500A, (~1000V)	Fuse bases are designed for mounting fuse-links Ultra Quick type S.

Type	Code No.	Packaging (pcs)	Weight (g)
US00-1/80	004349005 (JMU 591 1001)	1/1	185g
US1...3-1/80-110	004349006 (JMU 991 1002)	1/1	950g

Note: Fuse base PK, STV, VLC, PCF, D0, D Catalogue "Building and Industry"



ULTRA QUICK