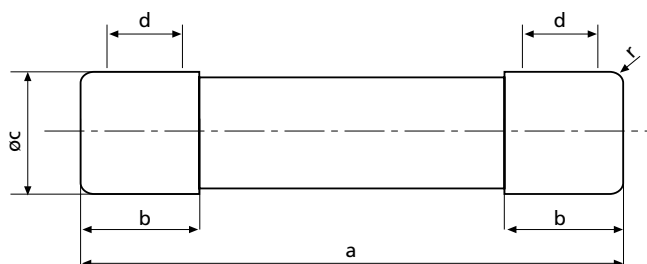


Cilindrični rastalni ulošci

Tehnički podaci	
Nazivni napon	400 V a.c., 500 V a.c., 690 V a.c.
Nazivna struja	CH 8 1-25 A/400 V
	CH 10 0,5-25 A/500 V (20-25 A/400 A aM), 32 A/400 V
	CH 14 2-32 A/690 V (32 A/500 V aM), 40-50 A/500 V (50 A/400 V aM)
	CH 22 16-40 A/690 V, 50-100 A/500 V (50 A/690 V aM)
Nazivna frekvencija	50 Hz
Nazivna prekidna moć	100 kA
Karakteristika	gG, aM
Materijal tijela	C 110, C 410
Materijal kontakata	CuZn28, gal.Ni, gal.Ag

veličina	a	b maks.	c	d min.	r
8 x 32	31,5±0,5	6,7	8,5±0,1	4	1±0,5
10 x 38	38,0±0,6	10,5	10,3±0,1	6	1,5±0,5
14 x 51	51,0+0,6/-1	13,8	14,3±0,1	7,5	±1
22 x 58	58,0+0,1	16,2	22,2±0,1	11	±1



Tehnički podaci CH14 - SRF				
tip	8/20 µsec jačina udarnog vozla (A)	Topljivi integral I ² t (A ² s)	Celokupni integral I ² t (A ² s)	I _{peak} kod 130 kA
SRF 10	10.000	2.360	10.370	8.320
SRF 20	20.000	5.490	17.700	10.430
SRF 30	30.000	16.750	39.880	13.540
SRF 40	40.000	33.680	72.800	17.480

Tehnički podaci - C

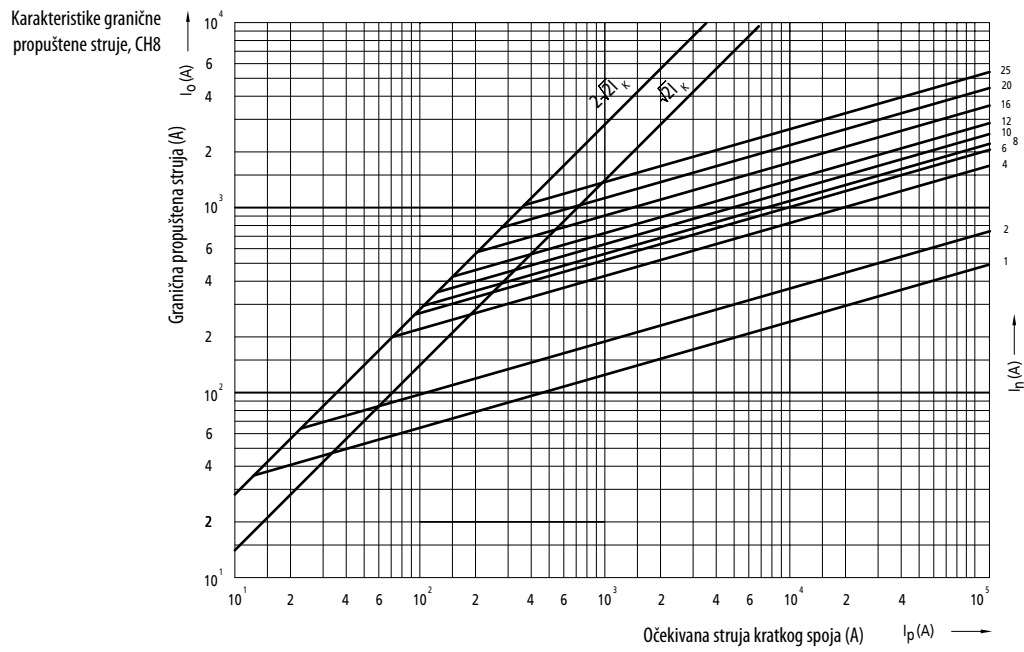
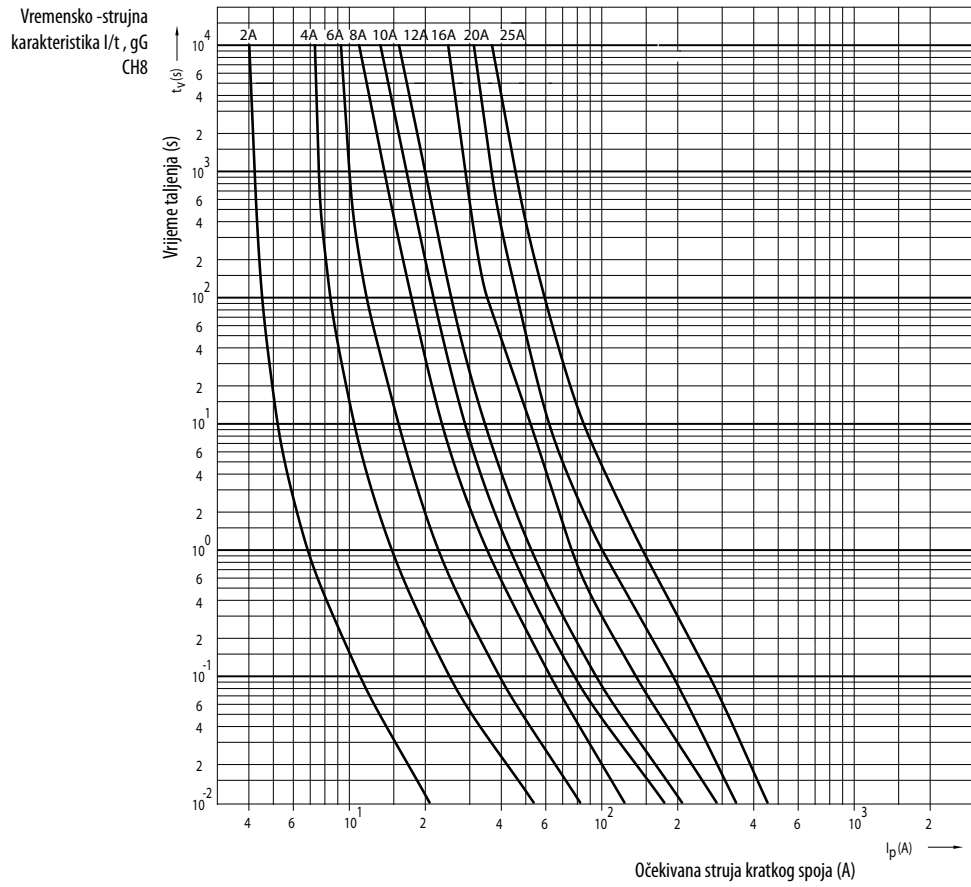
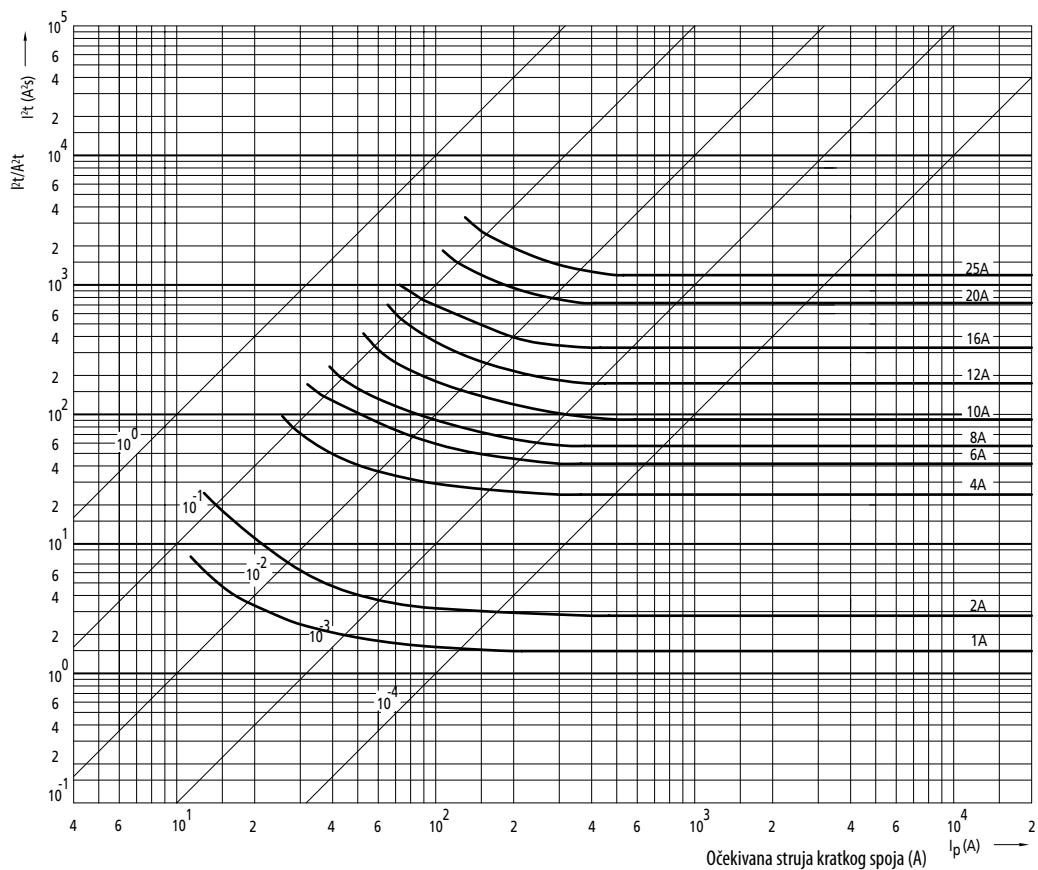
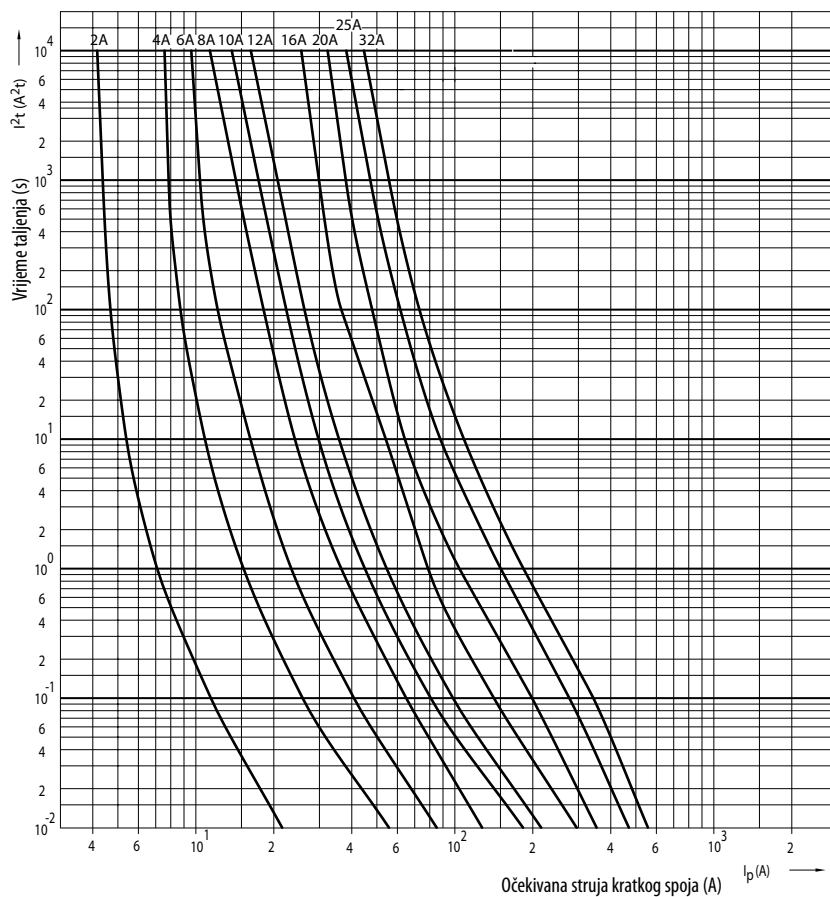


Diagram I^2t karakteristike, CH8



Vremensko-strujna karakteristika $I/t, gG$ CH10



Tehnički podaci - C

Karakteristike granične propuštene struje, CH10

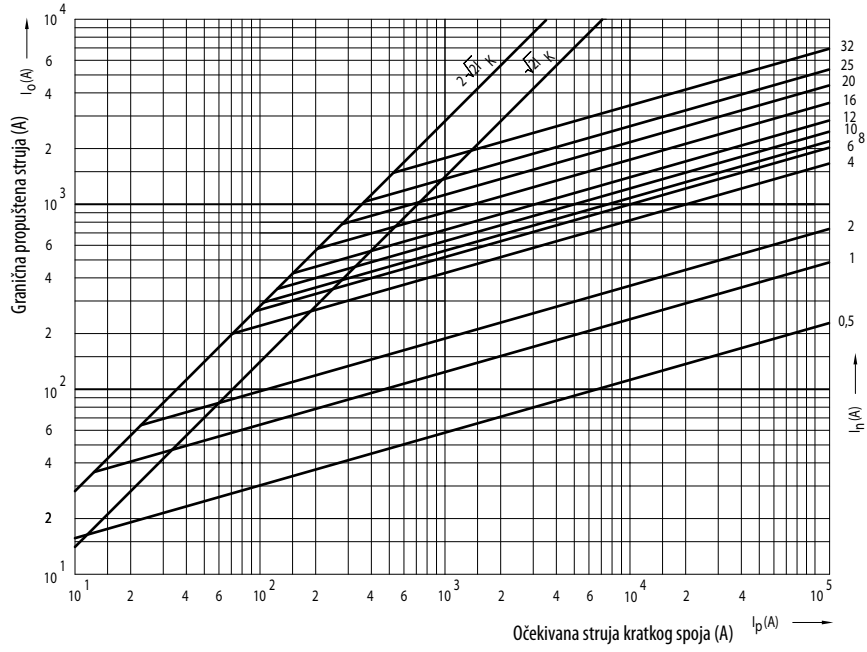
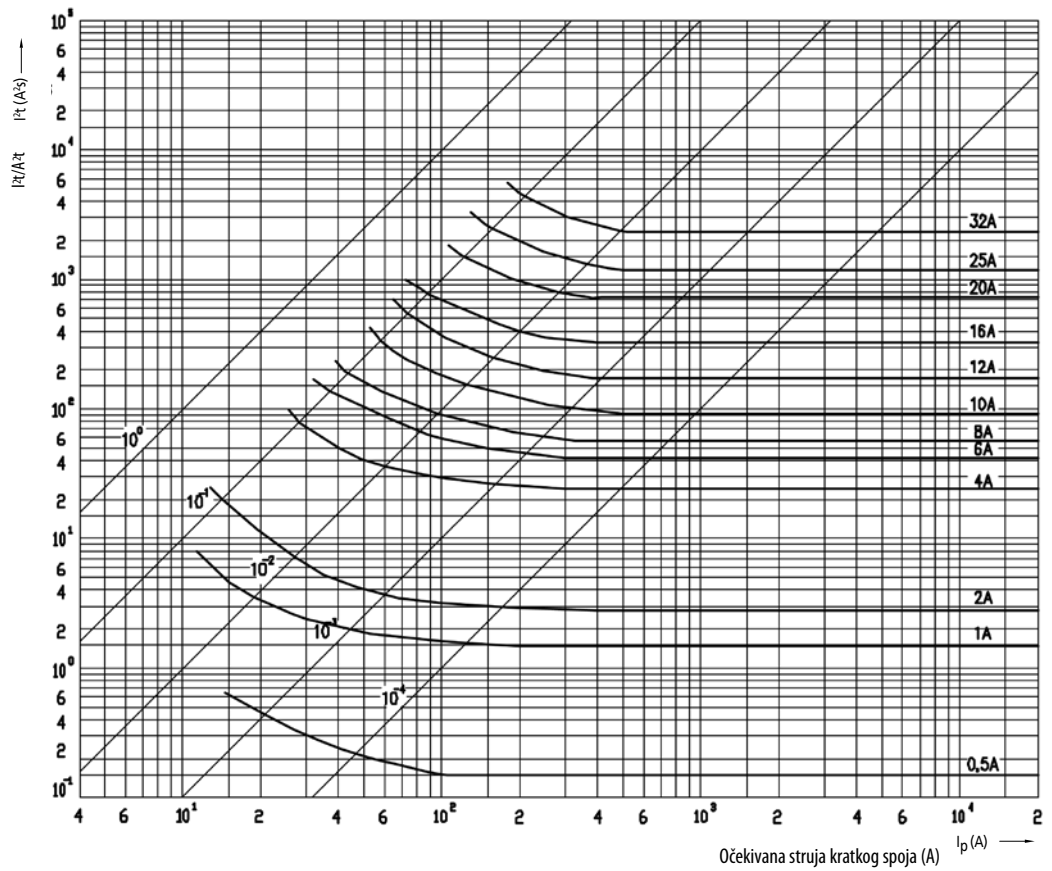
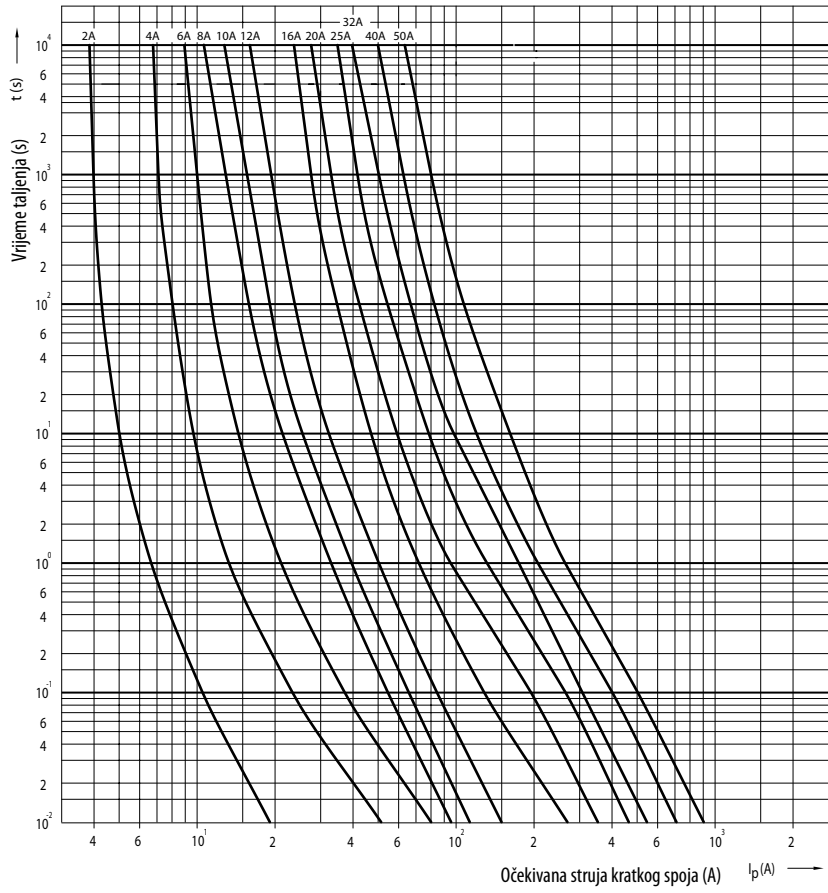


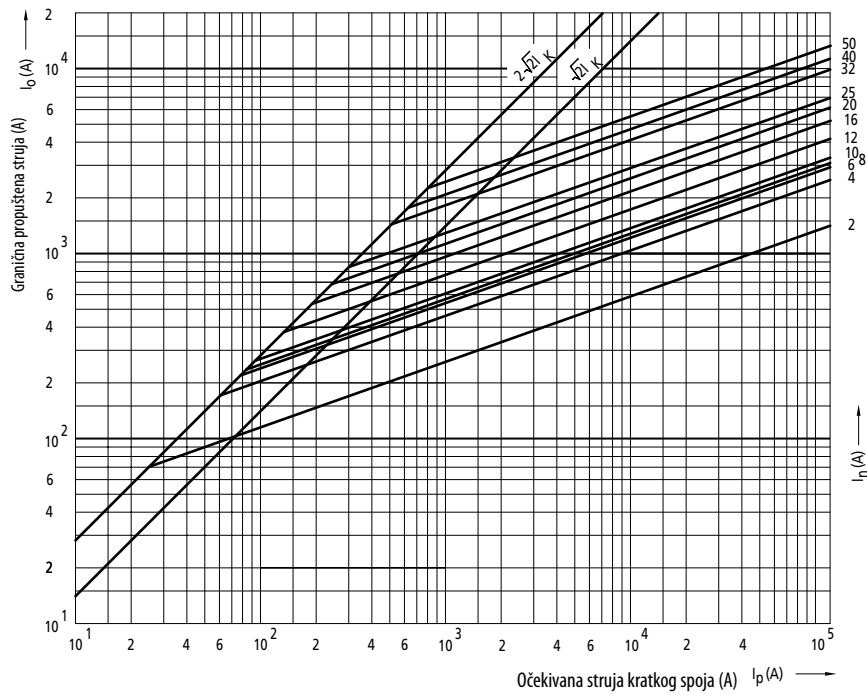
Diagram I²t karakteristik, CH10



Vremensko-strujna karakteristika I/t, gG CH14

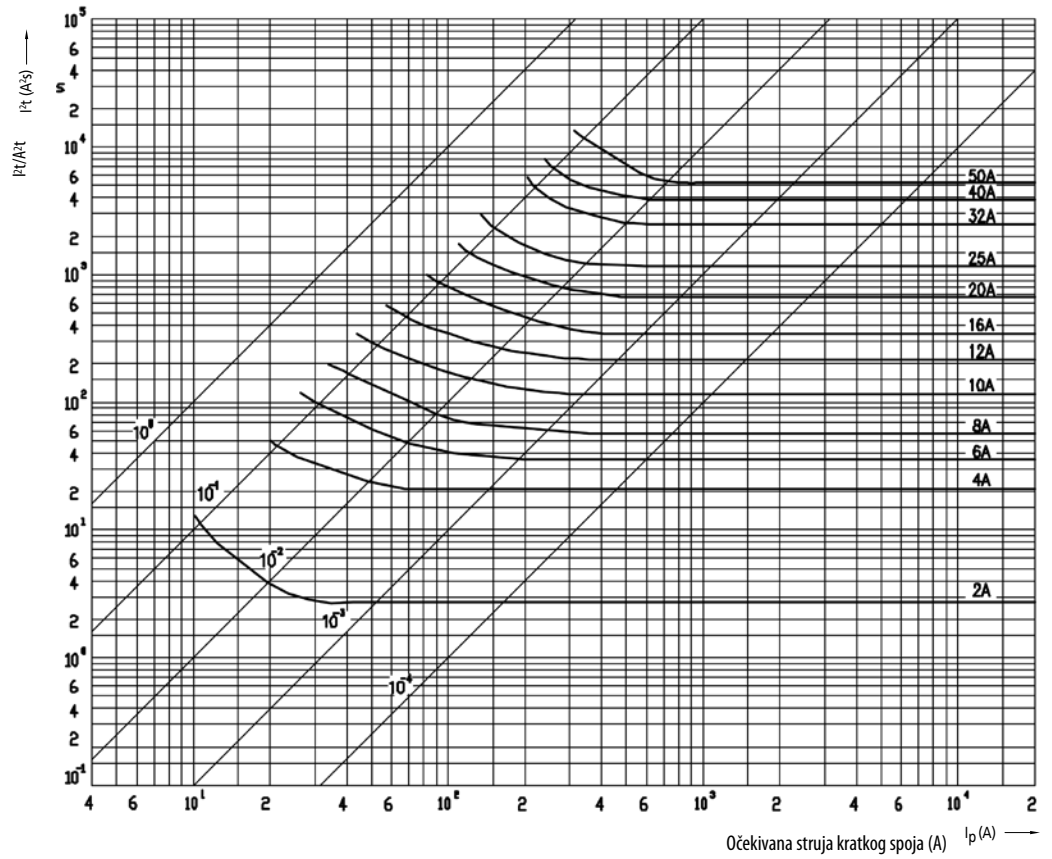


Karakteristike granične propuštene struje, CH14

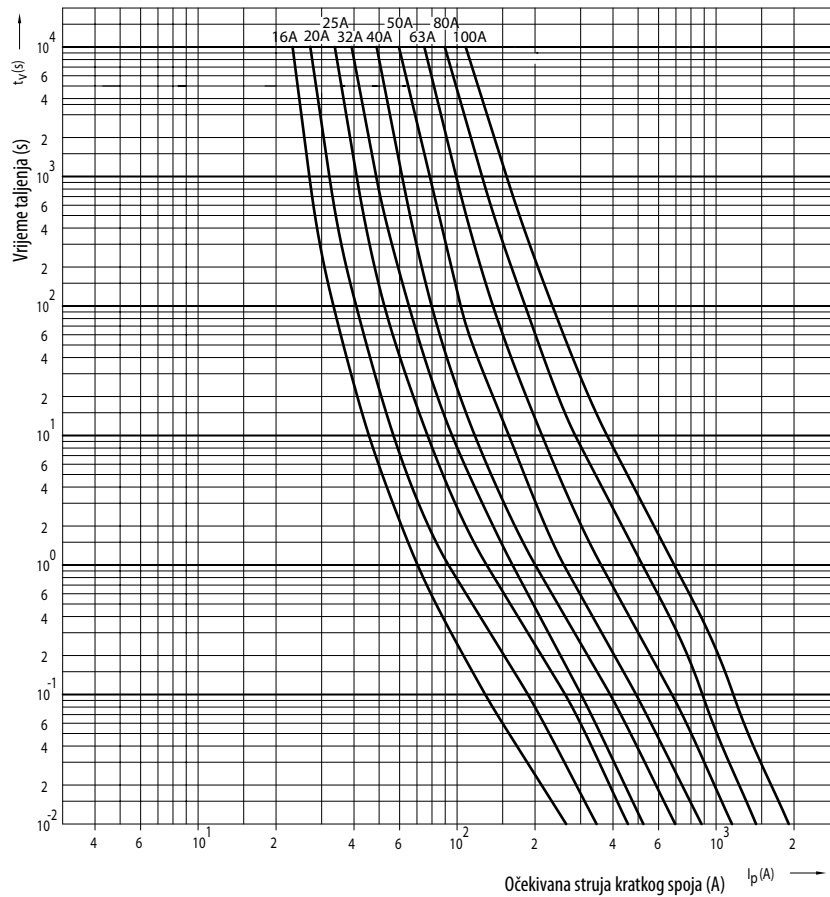


Tehnički podaci - C

Diagram I²t
karakteristik, CH14



Vremensko-strujna
karakteristika I/t, gG
CH22



Karakteristike granične propuštene struje, CH22

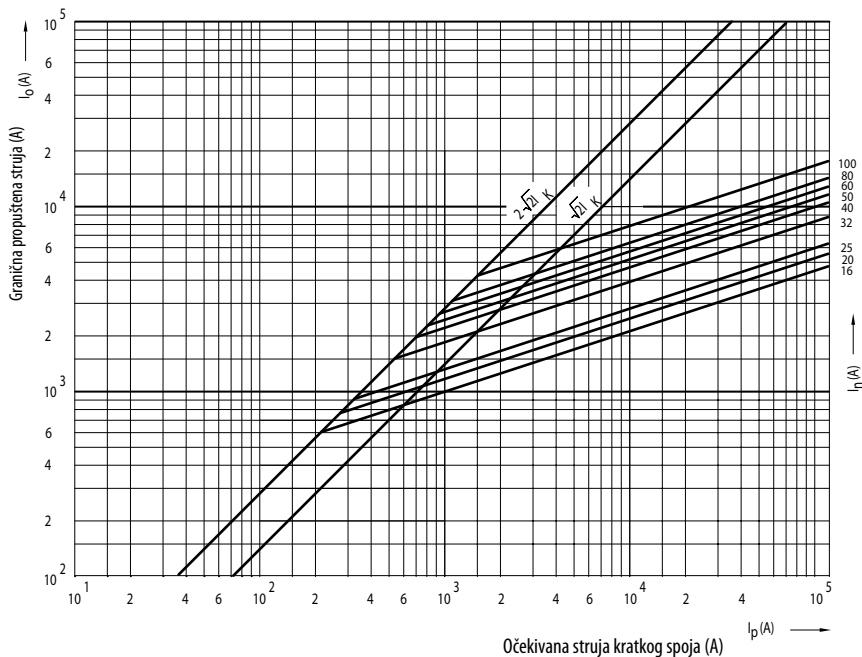
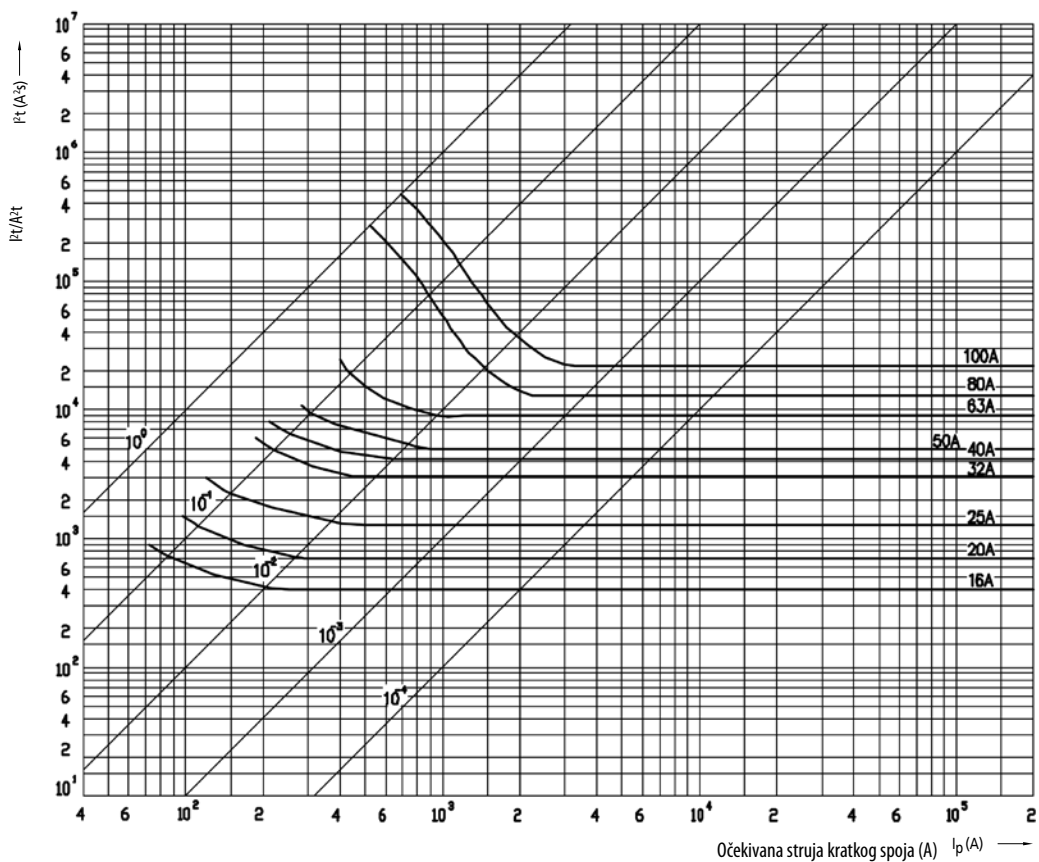
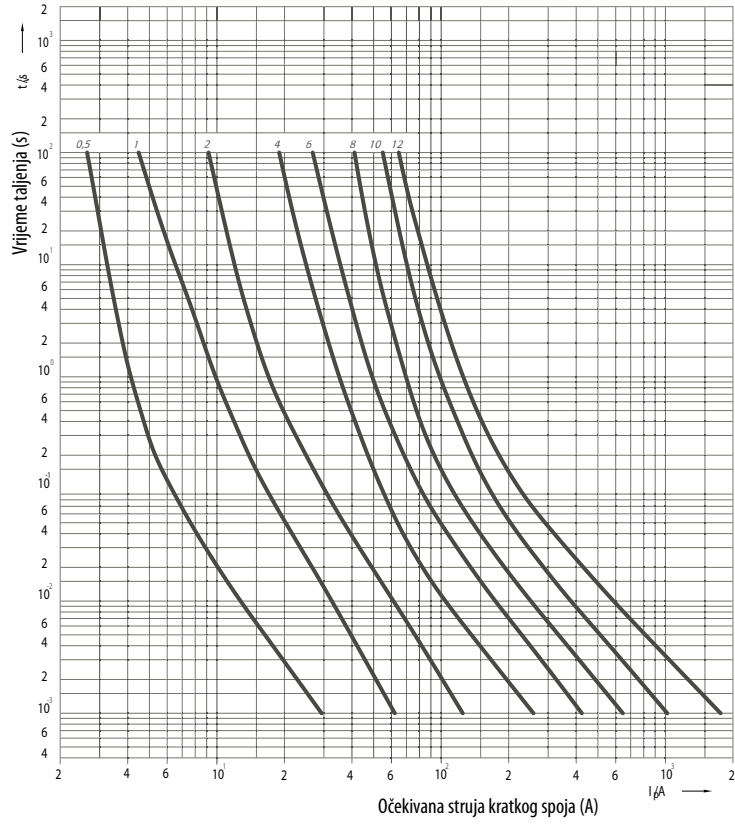


Diagram I^2t karakteristik, CH22

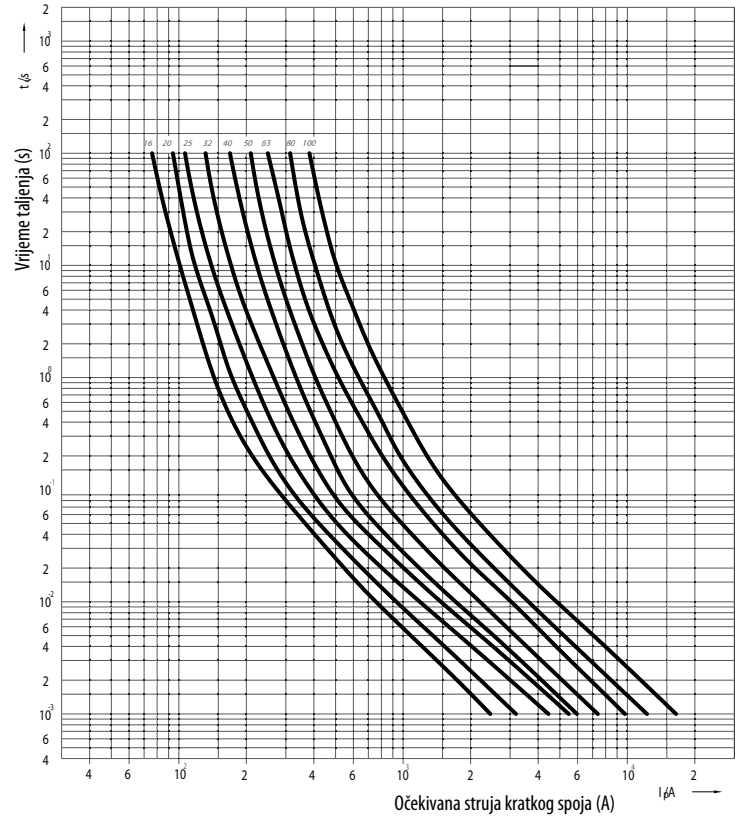


Tehnički podaci - C

Vremensko-strujna karakteristika I/t, Am CH10, 14, 22



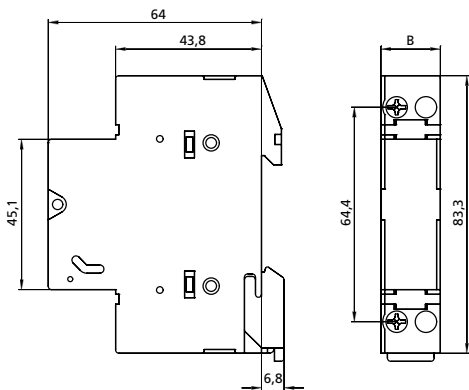
Vremensko-strujna karakteristika I/t, aM CH10, 14, 22



Rastavljači - osigurači za cilindrične rastalne uloške

Tehnički podaci											
Tip	VLC8	PCF8	VLC10	PCF10	VLC CC	PCF CC	VLC 14	VLC22	PCF DC	PCF DC	
Broj polova	1p, 1p+N, 2p, 3p, 3p+N				1p, 2p, 3p		1p, 1p+N, 2p, 3p, 3p+N		1p, 2p	1p, 2p	
Vrsta struje	a.c.										
Kategorija upotrebe	AC-22B							AC21-B		DC20-B	DC20-B
Nazivni radni napon Ue (V)	400	400	400/690 1p+N	400/690 1p+N	600	600	690	690	1000	900	
Nazivna frekvencija (Hz)					60		50		0	0	
Nazivni pridržni napon Uimp (kV)	8	4	8	4	8	4	8	8	4	4	
Nazivna radna struja (A)	20	20	32	32	30	30	50	125	20	25	
Nazivna pridržna struja kratkog spoja Icw (A)	240	240	390	390	360	360	600	1500	240	240	
Nazivna uslovna struja kratkog spoja (kA)	50	100		200		100		25	25		
Priključna stezaljka (max mm2)	25	10	25	10	25	10	35	50	10	10	
Maksimalna dozvoljena snaga gubitaka	2,5	2,5	3	3	3	3	5	9,5	3	3	
Certifikati	UL	Int.	CCA/CB, UL, CSA	CCA/CB, UL	Int.	Int.	CCA/CB, UL, CSA	CCA/CB	Int.	Int.	

Rastavljači - osigurači PCF

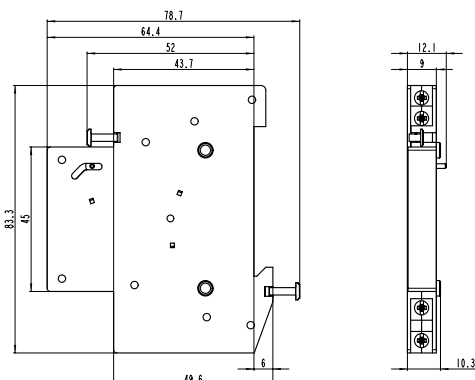


Rastavljači - osigurači PCF 8, PCF 10, PCF DC

tip	dimenzije
	B
1p	17,5
1p+N	17,5
2p	35
3p	52,5
3p+N	52,5

Primjedba: PCF CC bit će dostupan do kraja 2009

Pomoćna sklopka PS PCF



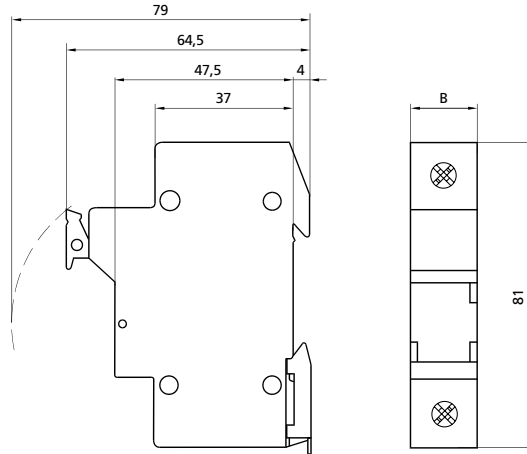
Rastavljači - osigurači VLC

Rastavljači - osigurači VLC 8, VLC 10

tip	dimenzije B
VLC 8, 10 1p	17,5
VLC 8, 10 1p+N	35
VLC 8, 10 2p	35
VLC 8, 10 3p	52,5
VLC 8, 10 3p+N	70

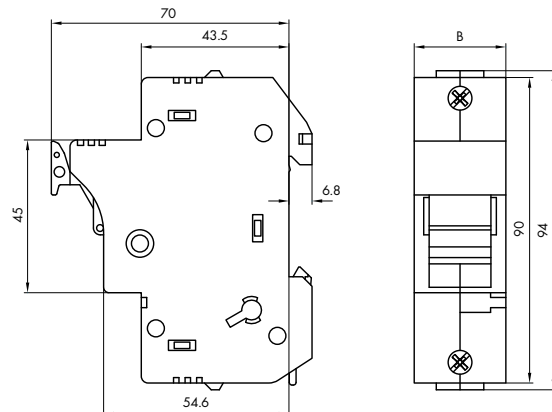
Rastavljači - osigurači VLC CC

tip	dimenzije B
VLC 8, 10 1p	17,5
VLC 8, 10 2p	35
VLC 8, 10 3p	52,5



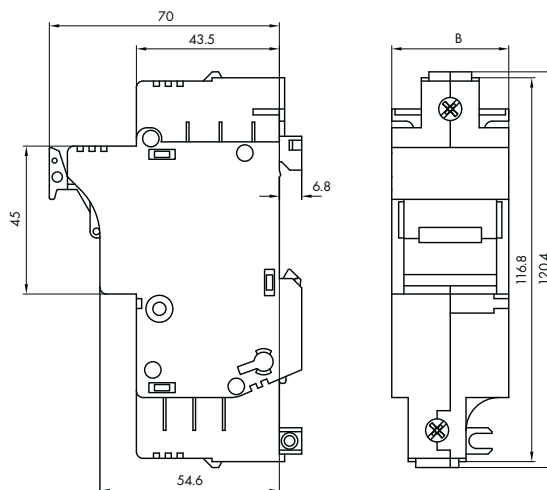
Rastavljači - osigurači VLC 14

tip	dimenzije B
VLC 14 1p	27
VLC 14 1p+N	54
VLC 14 2p	54
VLC 14 3p	81
VLC 14 3p+N	108

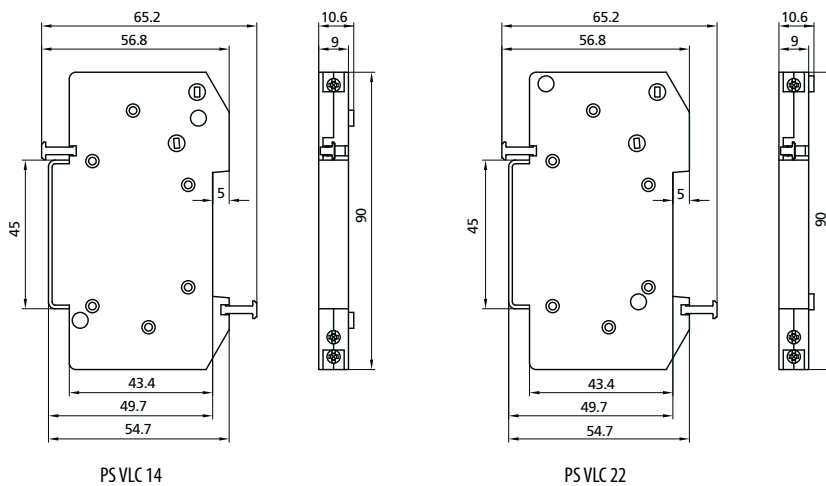


Rastavljači - osigurači VLC 22

tip	dimenzije B
VLC 22 1p	35,6
VLC 22 1p+N	71,2
VLC 22 2p	71,2
VLC 22 3p	106,8
VLC 22 3p+N	142,4



Pomoćna sklopka PS VLC



PS VLC 14

PS VLC 22