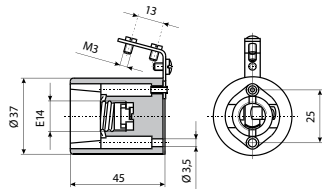


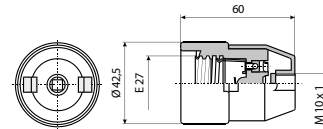
## Porculansko grlo tip E 14 i E 27

**Tehnički podaci**

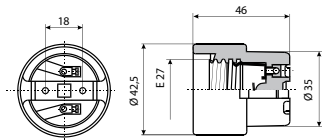
Nazivni napon $U_n$	250 V
Nazivna struja $I_n$	2; 4 A
Presjek vodiča	0,5 - 2,5 mm <sup>2</sup>
Dimenzije	E-14 i E-27
Standard	IEC 238, DIN VDE 0616, EN 60 238



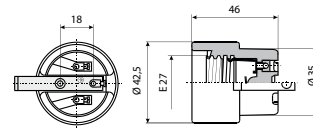
Porculansko grlo E 14 bez nosača



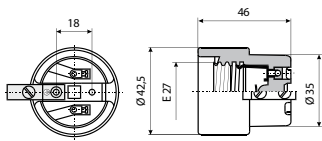
Porculansko grlo E 27 sa poklopcem P



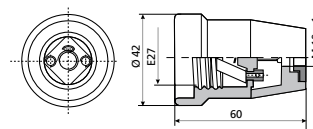
Porculansko grlo E 27



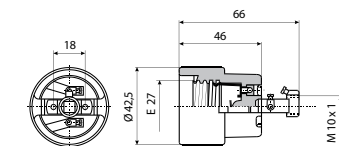
Porculansko grlo E 27 sa nosačem L



Porculansko grlo E 27 sa nosačem S



Porculansko grlo E 27 sa porc. poklopcem

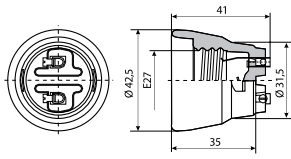


Porculansko grlo E 27 sa nosačem D

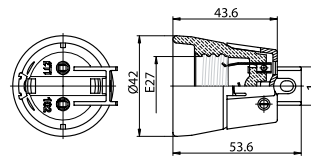
## Porculansko grlo E 27, tip 100-102, 202-204

**Tehnički podaci**

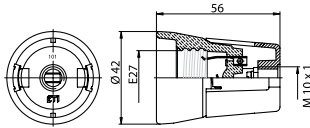
Nazivni napon $U_n$	250 V
Nazivna struja $I_n$	4 A
Presjek vodiča	0,5-2,5 mm <sup>2</sup>
Oznaka	E-27
Standard	EN 60 238
Temperatura djelovanja	T = 240° C, tip 101 T = 160° C, tip 102



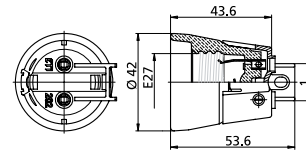
Porculansko grlo E 27-100



Porculansko grlo E 27-102



Porculansko grlo E 27-101

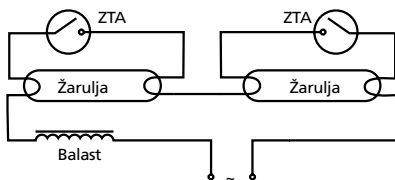


Porculansko grlo E 27-202

## Tinjavi starteri za fluorescentne žarulje

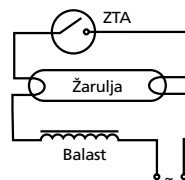
### Tinjavi starteri za fluorescentne žarulje ZTA i ZTE

tip	Priključenje	Radni napon [V]	Usklađeni s
ZTA 4...22 W	Jednostruki AC 110-130 V 50Hz U seriji AC 220-240 V 50 Hz	Min. 103,5 Min. 180	IEC 60155 EN 60155 VDE 0712
ZTE/2 4...65, 80 W	U seriji 220-240 V	Min. 180	IEC 60155 EN 60155 VDE 0712

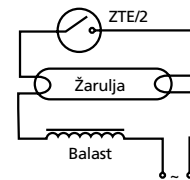


SERIJA 220-240 V~

ZTA4...22 W



JEDNOSTRUKI 110-130 V~



JEDNOSTRUKI 220-240 V~

ZTE/2 4...65, 80 W