



Obrezija 5, 1411 Izlake, Slovenia
Telephone: +386 (0)3 56 57 570
Fax: +386 (0)3 56 74 077
e-mail: eti@eti.si
Internet: www.eti.si



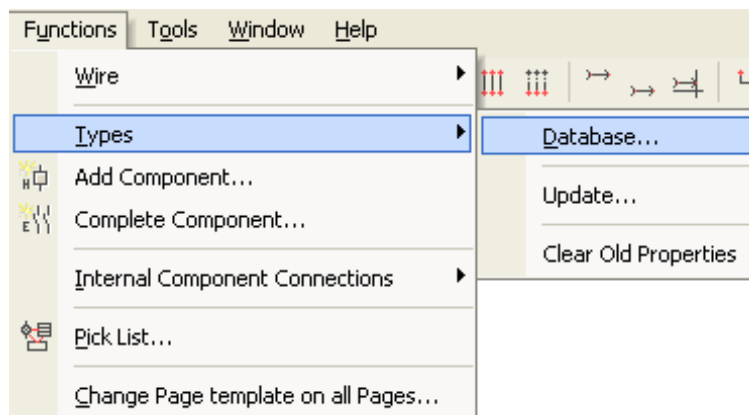
Respected,
CADdy++/SEE user

In front of You are instructions for ETI Elektroelement d.d. Product Database import in TypeDatabase. To function properly, You must copy ETI.ses Symbol database in the SEE Electrical Installation folder, folder Symbols (probably: c:\Program Files\IGE-XAO\SEE Electrical V5R1\Symbols\)

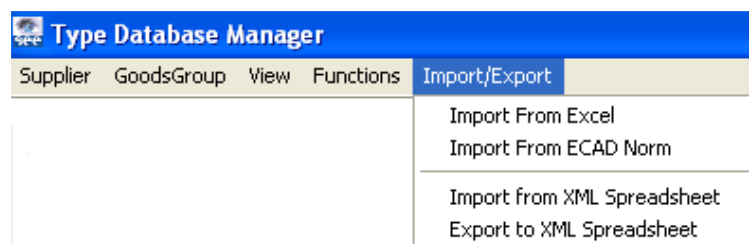
The ETI Elektroelement d.d. product database is based on ETI catalogue of electro-technical products and follows the same sort order. To obtain more information on the catalogue, please visit our website www.eti.si .

ETI Elektroelement d.d. Product Database import Instructions

1. In SEE Electrical open Type Database (Functions Typedatabase)



2. Select Import/Export



3. At your disposal are multiple import possibilities for Products (Type informations) import:

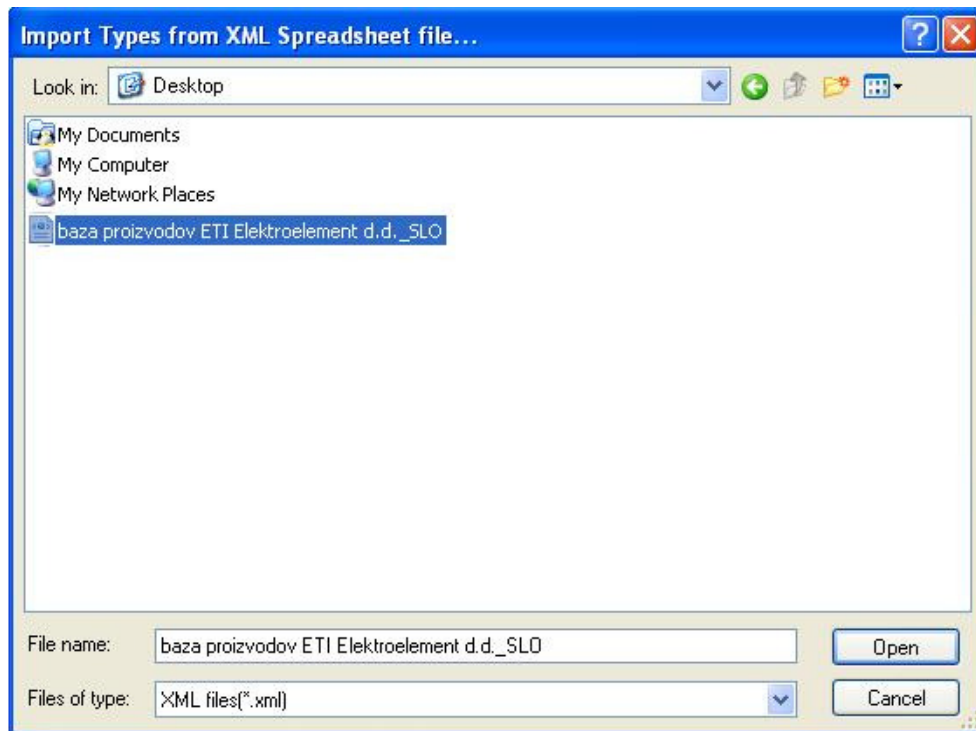
- I. Import from XML Spreadsheet
- II. Import From Excel

I. Advanced data import from XML

New functionality in SEE Electrical V5 R1 is Data import from XML File. Simply select XML formatted database and click Open.

Database import is possible in:

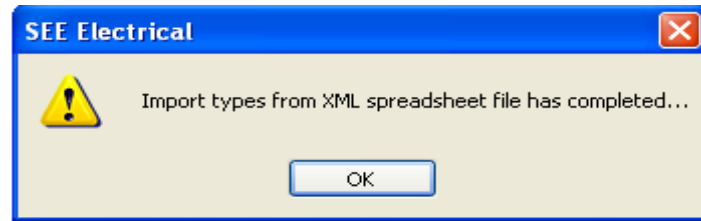
- Slovenian Language (baza proizvodov ETI Elektroelement d.d._SLO.xml);
- English Language (Type Database ETI Elektroelement d.d._ENG.xml);
- Polish Language (Type Database ETI Elektroelement d.d._PL.xml);
- Croatian Language (Type Database ETI Elektroelement d.d._HR.xml);
- Czech Language (Type Database ETI Elektroelement d.d._SVK.xml);
- Hungarian Language (Type Database ETI Elektroelement d.d._HU.xml);
- Bulgarian Language (Type Database ETI Elektroelement d.d._BG.xml)



A Window opens with Information regarding of Quantity and Time needed for Product Database Import.



After a successful Import following Message is being displayed.



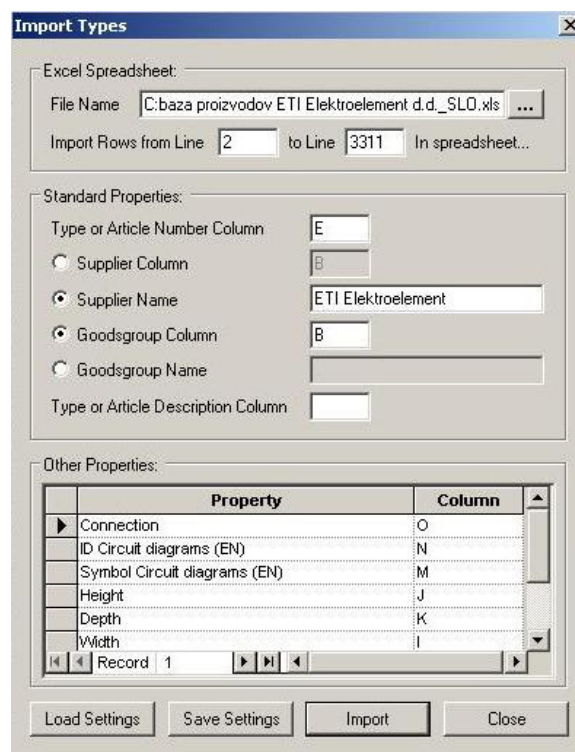
Product database ETI Elektroelement d.d. is imported and ready for use in SEE Electrical software.

II. Import From Excel

Data import from .xls format is still enabled. Prior to import is necessary to adjust (define), which attributes you want to import. For import of ETI Elektroelement d.d. Database are attached already saved settings in .txf format. Saved settings activate with a click on "Load Settings" and select respective file, with txf extension.

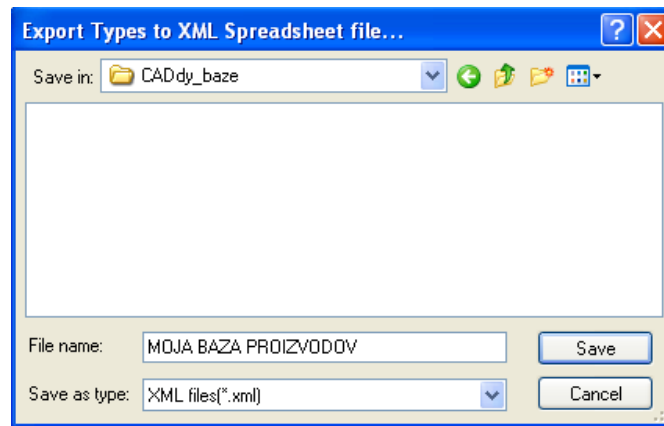
Product database import is enabled in:

- Slovenian Language (baza proizvodov ETI Elektroelement d.d._SLO.txf);
- English Language (Type Database ETI Elektroelement d.d._ENG.txf);
- Polish Language (Type Database ETI Elektroelement d.d._PL.txf)
- Croatian Language (Type Database ETI Elektroelement d.d._HR.txf)
- Czech Language (Type Database ETI Elektroelement d.d._SVK.txf)
- Hungarian Language (Type Database ETI Elektroelement d.d._HU.txf)
- Bulgarian Language (Type Database ETI Elektroelement d.d._BG.txf)



4. Export to XML Spreadsheet

Functionality in SEE Electrical V5 R1 is Data export to XML file, where is further adapting easier, when necessary.



In event of questions You can send them on our e-mail address caddy@ib-procadd.si. We invite you, to regularly review news on CADdy portalu www.caddy-electrical.net.

IB-PROCADD d.o.o.
Dunajska cesta 106
1000 Ljubljana
SLOVENIJA
E-mail: caddy@ib-procadd.si
Tel.: +386 1 565 72 50
Fax: +386 1 568 45 78
www.ib-procadd.si
www.caddy-electrical.net