

Motorski sklopnik CEM

Primjena:

Sklopnici se koriste za daljinsko upravljanje i zaštitu (u kombinaciji s nadstrujnim relejima) elektromotora i drugih električnih opterećenja s nazivnom snagom do 160kW (kod napona 400V AC3).

Prednosti:

- Montaža na DIN letvu i montažne ploče
- Visoke tehničke performanse
- Mali gubitak snage (gubitak ohmske topline)
- Zaštita od direktnog dodira sprijeda (IEC 536) IP20
- Široki dijapazon pribora
- Gušenje udarnog napona (kao opcija)
- Upravljački naponi 24VAC, 48VAC, 110VAC, 230VAC, 400VAC



Naručivanje:

CEM9.01-230V-50/60Hz

I(AC3)[A]

Napon špule

Broj NO

Broj NC - Broj i tip pomoćnih kontakata

Motorski sklopnik CEM9.10, 25A(AC1), 9A, 4kW(AC3)*				
tip	šifra	shema veza	težina [g]	pakiranje [kom]
CEM9.10-24V-50/60Hz	004642120		295	1
CEM9.10-48V-50/60Hz	004642121		295	1
CEM9.10-110V-50/60Hz	004642122		295	1
CEM9.10-230V-50/60Hz	004642123		295	1
CEM9.10-400V-50/60Hz	004642124		295	1
CEM9.10-24V DC	004642220		510	1
CEM9.10-220V DC	004642221		510	1

* integrirani pomoćni kontakt 1 NO

Motorski sklopnik CEM9.01, 25A(AC1), 9A, 4kW(AC3)*				
tip	šifra	shema veza	težina [g]	pakiranje [kom]
CEM9.01-24V-50/60Hz	004642110		295	1
CEM9.01-48V-50/60Hz	004642111		295	1
CEM9.01-110V-50/60Hz	004642112		295	1
CEM9.01-230V-50/60Hz	004642113		295	1
CEM9.01-400V-50/60Hz	004642114		295	1
CEM9.01-24V DC	004642210		510	1
CEM9.01-220V DC	004642211		510	1

* integrirani pomoćni kontakt 1 NC

Motorski sklopnik CEM12.10, 25A(AC1), 12A, 5.5kW (AC3)*				
tip	šifra	shema veza	težina [g]	pakiranje [kom]
CEM12.10-24V-50/60Hz	004643120		295	1
CEM12.10-48V-50/60Hz	004643121		295	1
CEM12.10-110V-50/60Hz	004643122		295	1
CEM12.10-230V-50/60Hz	004643123		295	1
CEM12.10-400V-50/60Hz	004643124		295	1
CEM12.10-24V DC	004643220		510	1
CEM12.10-220V DC	004643221		510	1

* integrirani pomoćni kontakt 1 NO

Motorski sklopnik CEM12.01, 25A(AC1), 12A, 5.5kW (AC3)*				
tip	šifra	shema veza	težina [g]	pakiranje [kom]
CEM12.01-24V-50/60Hz	004643110		295	1
CEM12.01-48V-50/60Hz	004643111		295	1
CEM12.01-110V-50/60Hz	004643112		295	1
CEM12.01-230V-50/60Hz	004643113		295	1
CEM12.01-400V-50/60Hz	004643114		295	1
CEM12.01-24V DC	004643210		510	1
CEM12.01-220V DC	004643211		510	1

* integrirani pomoćni kontakt 1 NC



Pomoćni blok na stranici 188



Motorski sklopnik CEM18.10, 32A(AC1), 18A, 7.5kW (AC3)*

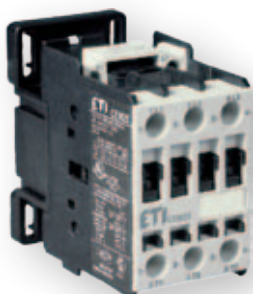
tip	šifra	shema veza	težina [g]	pakiranje [kom]
CEM18.10-24V-50/60Hz	004644120		295	1
CEM18.10-48V-50/60Hz	004644121		295	1
CEM18.10-110V-50/60Hz	004644122		295	1
CEM18.10-230V-50/60Hz	004644123		295	1
CEM18.10-400V-50/60Hz	004644124		295	1
CEM18.10-24V DC	004644220		510	1
CEM18.10-220V DC	004644221		510	1

* integrirani pomoćni kontakt 1 NO

Motorski sklopnik CEM18.01, 32A(AC1), 18A, 7.5kW (AC3)*

tip	šifra	shema veza	težina [g]	pakiranje [kom]
CEM18.01-24V-50/60Hz	004644110		295	1
CEM18.01-48V-50/60Hz	004644111		295	1
CEM18.01-110V-50/60Hz	004644112		295	1
CEM18.01-230V-50/60Hz	004644113		295	1
CEM18.01-400V-50/60Hz	004644114		295	1
CEM18.01-24V DC	004644210		510	1
CEM18.01-220V DC	004644211		510	1

* integrirani pomoćni kontakt 1 NC



Pomoćni blok na stranici 188


Motorski sklopnik CEM25.00, 45A(AC1), 25A, 11kW (AC3)

tip	šifra	shema veza	težina [g]	pakiranje [kom]
CEM25.00-24V-50/60Hz	004645100		295	1
CEM25.00-48V-50/60Hz	004645101		295	1
CEM25.00-110V-50/60Hz	004645102		295	1
CEM25.00-230V-50/60Hz	004645103		295	1
CEM25.00-400V-50/60Hz	004645104		295	1
CEM25.00-24V DC	004645200		510	1
CEM25.00-220V DC	004645201		510	1

For different configurations of auxiliary contacts up to 4 auxiliary contacts can be added to contactor and must be ordered separately."

Motorski sklopnik CEM32.00, 60A(AC1), 32A, 15kW (AC3)

tip	šifra	shema veza	težina [g]	pakiranje [kom]
CEM32.00-24V-50/60Hz	004646100		520	1
CEM32.00-48V-50/60Hz	004646101		520	1
CEM32.00-110V-50/60Hz	004646102		520	1
CEM32.00-230V-50/60Hz	004646103		520	1
CEM32.00-400V-50/60Hz	004646104		520	1
CEM32.00-24V DC	004646200		850	1
CEM32.00-220V DC	004646201		850	1

For different configurations of auxiliary contacts up to 4 auxiliary contacts can be added to contactor and must be ordered separately.

** 24V DC (24...28 V DC), 220V DC (208...240V DC)

Motorski sklopnik CEM40.00, 60A(AC1), 40A, 18.5kW (AC3)

tip	šifra	shema veza	težina [g]	pakiranje [kom]
CEM40.00-24V-50/60Hz	004647100		540	1
CEM40.00-48V-50/60Hz	004647101		540	1
CEM40.00-110V-50/60Hz	004647102		540	1
CEM40.00-230V-50/60Hz	004647103		540	1
CEM40.00-400V-50/60Hz	004647104		540	1
CEM40.00-24V DC	004647200		850	1
CEM40.00-220V DC	004647201		850	1

For different configurations of auxiliary contacts up to 4 auxiliary contacts can be added to contactor and must be ordered separately.

** 24V DC (24...28V DC), 220V DC (208...240V DC)


Motorski sklopnik CEM50.00, 80A(AC1), 50A, 22kW (AC3)

tip	šifra	shema veza	težina [g]	pakiranje [kom]
CEM50.00-24V-50/60Hz	004648100		1105	1
CEM50.00-48V-50/60Hz	004648101		1105	1
CEM50.00-110V-50/60Hz	004648102		1105	1
CEM50.00-230V-50/60Hz	004648103		1105	1
CEM50.00-400V-50/60Hz	004648104		1105	1
CEM50.00-24V DC **	004648200		1240	1
CEM50.00-220V DC **	004648201		1240	1

For different configurations of auxiliary contacts up to 6 auxiliary contacts can be added to contactor and must be ordered separately.

** 24V DC (24...28V DC), 220V DC (208...240V DC)


Motorski sklopnik CEM65.00, 110A(AC1), 65A, 30kW (AC3)

tip	šifra	shema veza	težina [g]	pakiranje [kom]
CEM65.00-24V-50/60Hz	004649100		1120	1
CEM65.00-48V-50/60Hz	004649101		1120	1
CEM65.00-110V-50/60Hz	004649102		1120	1
CEM65.00-230V-50/60Hz	004649103		1120	1
CEM65.00-400V-50/60Hz	004649104		1120	1
CEM65.00-24V DC **	004649200		1240	1
CEM65.00-220V DC **	004649201		1240	1

For different configurations of auxiliary contacts up to 6 auxiliary contacts can be added to contactor and must be ordered separately.

** 24V DC (24...28V DC), 220V DC (208...240V DC)

Pomoćni blok na stranici 188


Motorski sklopnik CEM80.00, 110A(AC1), 80A, 37kW (AC3)

tip	šifra	shema veza	težina [g]	pakiranje [kom]
CEM80.00-24V-50/60Hz	004650100		1130	1
CEM80.00-48V-50/60Hz	004650101		1130	1
CEM80.00-110V-50/60Hz	004650102		1130	1
CEM80.00-230V-50/60Hz	004650103		1130	1
CEM80.00-400V-50/60Hz	004650104		1130	1
CEM80.00-24V DC **	004650200		1240	1
CEM80.00-220V DC **	004650201		1240	1

For different configurations of auxiliary contacts up to 6 auxiliary contacts can be added to contactor and must be ordered separately.

** 24V DC (24...28V DC), 220V DC (208...240V DC)

** podaci za područja radnih napona su u tehničkom dijelu kataloga.

Motorski sklopnik CEM95.00, 140A(AC1), 95A, 45kW (AC3)

tip	šifra	shema veza	težina [g]	pakiranje [kom]
CEM95.00-24V-50/60Hz	004651100		1450	1
CEM95.00-48V-50/60Hz	004651101		1450	1
CEM95.00-110V-50/60Hz	004651102		1450	1
CEM95.00-230V-50/60Hz	004651103		1450	1
CEM95.00-400V-50/60Hz	004651104		1450	1
CEM95.00-24V DC **	004651200		1500	1
CEM95.00-220V DC **	004651201		1500	1

For different configurations of auxiliary contacts up to 6 auxiliary contacts can be added to contactor and must be ordered separately.

** 24V DC (24...28 V DC), 220V DC (208...240V DC)

Motorski sklopnik CEM105.00, 140A(AC1), 105A, 55kW (AC3)

tip	šifra	shema veza	težina [g]	pakiranje [kom]
CEM105.00-24V-50/60Hz	004652100		1470	1
CEM105.00-48V-50/60Hz	004652101		1470	1
CEM105.00-110V-50/60Hz	004652102		1470	1
CEM105.00-230V-50/60Hz	004652103		1470	1
CEM105.00-400V-50/60Hz	004652104		1470	1
CEM105.00-24V DC **	004652200		1500	1
CEM105.00-220V DC **	004652201		1500	1

For different configurations of auxiliary contacts up to 6 auxiliary contacts can be added to contactor and must be ordered separately.

** 24V DC (24...28 V DC), 220V DC (208...240V DC)

Motorski sklopnik CEM112.22(E), 180A(AC1), 112A, 55kW (AC3)*

tip	šifra	shema veza	težina [g]	pakiranje [kom]
CEM112.22-24V-50/60Hz	004653140		2400	1
CEM112.22-48V-50/60Hz	004653141			
CEM112.22-110V-50/60Hz	004653142			
CEM112.22-230V-50/60Hz	004653143			
CEM112.22-400V-50/60Hz	004653144			
CEM112E.22-28V AC/DC **	004646018			
CEM112E.22-130V AC/DC **	004646019			
CEM112E.22-250V AC/DC **	004646020			
CEM112E.22-415V AC/DC **	004646021			

* pomoćni kontakt: priložena su dva bočna pomoćna kontaktna bloka 2 x (1NO + 1NC)

**28V AC/DC (24...28V), 130V AC/DC (110...130V), 250V AC/DC (208...250V), 415V AC/DC (360...415V)

Surge suppressor is already integrated

Motorski sklopnik CEM150E.22, 225A(AC1), 150A, 75kW(AC3)*

tip	šifra	shema veza	težina [g]	pakiranje [kom]
CEM150E.22-28V AC/DC **	004654240		2400	1
CEM150E.22-130V AC/DC **	004646023			
CEM150E.22-250V AC/DC **	004654241			
CEM150E.22-415V AC/DC **	004646025			

* pomoćni kontakt: priložena su dva bočna pomoćna kontaktna bloka 2 x (1NO + 1NC)

**28V AC/DC (24...28V), 130V AC/DC (110...130V), 250V AC/DC (208...250V), 415V AC/DC (360...415V)

Surge suppressor is already integrated



Pomoćni blok na stranici188



Motorski sklopnik CEM180.22(E), 225A(AC1), 180A, 90kW (AC3)*				
tip	šifra	shema veza	težina [g]	pakiranje [kom]
CEM180.22-24V-50/60Hz	004655140		3900	1
CEM180.22-48V-50/60Hz	004655141			
CEM180.22-110V-50/60Hz	004655142			
CEM180.22-230V-50/60Hz	004655143			
CEM180.22-400V-50/60Hz	004655144			
CEM180E.22-28V AC/DC **	004646029			
CEM180E.22-130V AC/DC **	004646026			
CEM180E.22-250V AC/DC **	004646027			
CEM180E.22-415V AC/DC **	004646028			

* pomoćni kontakt: priložena su dva bočna pomoćna kontaktna bloka 2 x (1NO + 1NC)

**28V AC/DC (24...28V), 130V AC/DC (110...130V), 250V AC/DC (208...250V), 415V AC/DC (360...415V)

Surge suppressor is already integrated



Motorski sklopnik CEM250.22(E), 350A(AC1), 250A, 132kW (AC3)*				
tip	šifra	shema veza	težina [g]	pakiranje [kom]
CEM250.22-24V-50/60Hz	004656140		6000	1
CEM250.22-48V-50/60Hz	004656141			
CEM250.22-110V-50/60Hz	004656142			
CEM250.22-230V-50/60Hz	004656143			
CEM250.22-400V-50/60Hz	004656144			
CEM250E.22-28V AC/DC **	004646030			
CEM250E.22-130V AC/DC **	004646031			
CEM250E.22-250V AC/DC **	004646032			
CEM250E.22-415V AC/DC **	004646033			

* pomoćni kontakt: priložena su dva bočna pomoćna kontaktna bloka 2 x (1NO + 1NC)

**28V AC/DC (24...28V), 130V AC/DC (110...130V), 250V AC/DC (208...250V), 415V AC/DC (360...415V)

Surge suppressor is already integrated

** podaci za područja radnih napona su u tehničkom dijelu kataloga



Pomoćni blok na stranici 188

Motorski sklopnik CEM300.22(E), 410A(AC1), 300A, 160kW(AC3)*				
tip	šifra	shema veza	težina [g]	pakiranje [kom]
CEM300E.22-28V AC/DC	004656300		6900	1
CEM300E.22-50V AC/DC	004656301			
CEM300E.22-72V AC/DC	004656302			
CEM300E.22-130V AC/DC	004656303			
CEM300E.22-250V AC/DC	004656304			
CEM300E.22-415V AC/DC	004656305			

* pomoćni kontakt: priložena su dva bočna pomoćna kontaktna bloka 2 x (1NO + 1NC)

**28V AC/DC (24...28V), 130V AC/DC (110...130V), 250V AC/DC (208...250V), 415V AC/DC (360...415V)

Surge suppressor is already integrated



Pribor



Pomoćni blok - gornji

tip	šifra	opis	za upotrebu s	shema veza	težina [g]	pakiranje [kom]
BCXMFE10	004641510	1 NO	CEM9-CEM105		15	1
BCXMFE01	004641501	1 NC	CEM9-CEM105		15	1
BCXMFAE10	004642510	1 NO ranokočioni	CEM9-CEM105		15	1
BCXMFRE01	004643510	1 NC kasnokočioni	CEM9-CEM105		15	1

Nije za CEM7,5CN i CEM10CN!

Broj slobodnih mjesta na sklopnicima:

CEM 9 CEM 40: 4 kontaktna bloka

CEM 50 CEM 105: 6 kontaktna bloka

CEM 112 CEM 300: nije moguća montaža gornjeg, samo stranskog pomoćnog bloka



Pomoćni blok - stranski

tip	šifra	opis	za upotrebu s	shema veza	težina [g]	pakiranje [kom]
BCXMLE11	004644511	1 NO - 1 NC (osnovni)	CAEM4, CEM9-CEM250		15	1
BCXMLE20	004644520	2 NO (osnovni)	CAEM4, CEM9-CEM250		15	1
BCXMRLE11	004645511	1 NO - 1 NC montiran sa strane (nadgradni)	CAEM4, CEM9-CEM250		15	1
BCXMRLE20	004645520	2 NO montiran sa strane (nadgradni)	CAEM4, CEM9-CEM250		15	1

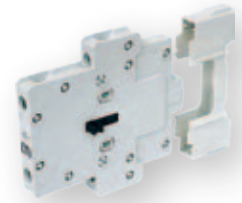
Nije za CEM7,5CN i CEM10CN!

Neposredno na bok sklopnika namjesti se "osnovni" bočni pomoćni kontaktni blok, kojega je moguće nadgraditi sa najviše po jednim "nadgradnim" bočnim pomoćnim kontaktnim blokom.

Najveći dozvoljeni broj pomoćnih kontakata skupno (bočna i gornja montaža):
maks. 4: CEM9-CEM25, CAEM 4
maks. 6: CEM32-CEM40
maks. 8: CEM50-CEM105
maks. 8: CEM112-CEM300

Mehanička blokada

tip	šifra	za upotrebu s	težina [g]	pakiranje [kom]
BLIME 9-10S	004643601	CEM9-CEM10S	50	1
BLIME 112-300E	004643602	CEM112(E)-CEM300(E)	150	1

**Ograničavač prenapona**

tip	šifra	napon svitka	za upotrebu s	težina [g]	pakiranje [kom]
BAMRCE4	004642701	24-48 VAC	CEM9-CEM40	14	1
BAMRCE5	004642702	50-127 VAC	CEM9-CEM40	14	1
BAMRCE6	004642703	130-250 VAC	CEM9-CEM40	14	1
BAMRCE7	004642705	24-48 VAC	CEM50-CEM10S	14	1
BAMRCE8	004642706	50-127 VAC	CEM50-CEM10S	14	1
BAMRCE9	004642707	130-250 VAC	CEM50-CEM10S	14	1
BAMDIE10	004643701	12-600 VDC	CEM9-CEM10S	14	1
BAMRCE13	004642708	24-48 VAC	CEM112-CEM250	14	1
BAMRCE14	004642711	50-250 VAC	CEM112-CEM250	14	1

